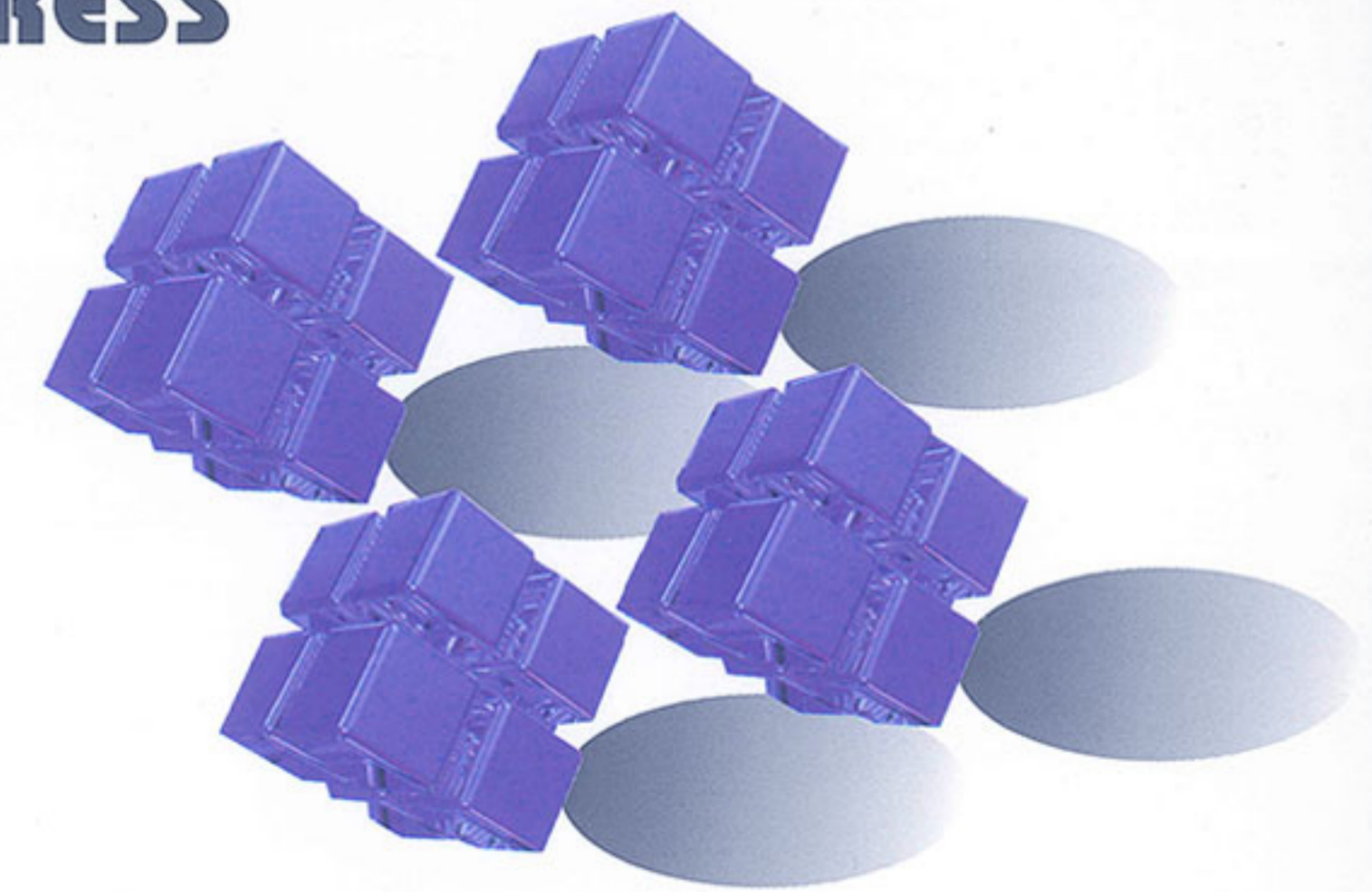


SANES



C型精密冲床 C TYPE POWER PRESS



SANES

誠懇、平穩、獨特 / SINCERE - SMOOTH - SPECIAL

申琦工業股份有限公司
SANES PRESSES CO.,LTD.

64057雲林縣斗六市科加二路3號
NO.3 KEJIA 2ND RD., DOULIU CITY, YUNLIN COUNTY, 64057 TAIWAN
TEL:886-5-5519922 FAX:886-5-5510033
<http://www.sanes-press.com> E-mail: sanes@ms32.hinet.net



To accomplish the precision and quality of pieces, the rigidity and improving the quality of die elements.

SCP

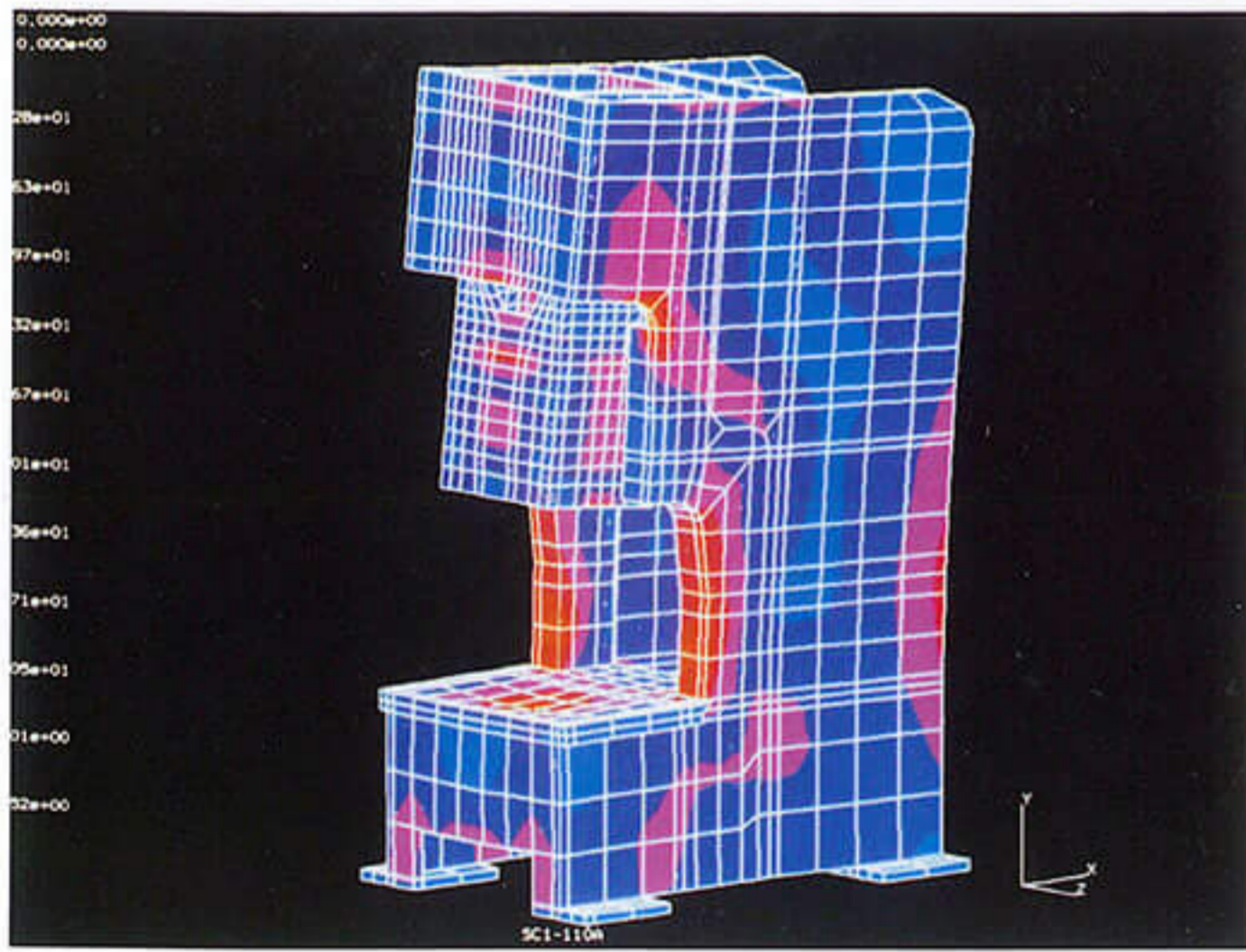
系列

特點：

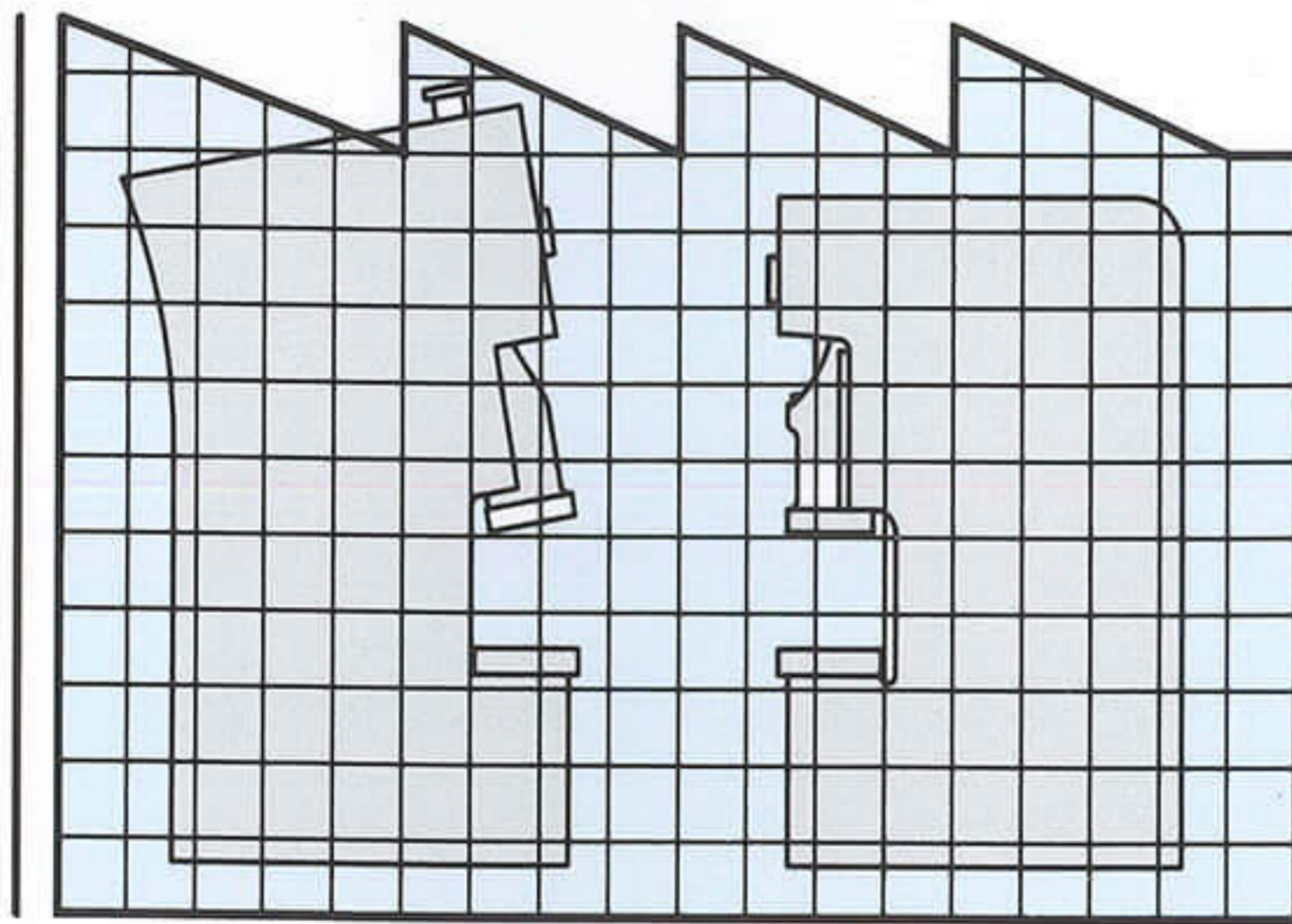
- 機架缺口最低的彎曲撓度
- 高傳動扭矩的濕式離合器
- 高信賴度之超負荷保護裝置

Features of SCP series

- *The minimal angular deflection of the frame*
- *High transmission wet clutch / brake*
- *Highly reliable over-load protection device.*



三維有限元素應力分析
3 Dimensional Stress Analysis
By Finite Element Method



Minimal angular deflection of the frame

- **Structural design:**
It is smaller in size than the conventional press, but more effective in space occupation
- **Angular deflection:**
The steel of the frame has high-tensile stress and minimal angular deflection.
This features to reduce punching deformation, maintain precise punching position, and prolong the life of dies.

機架缺口最低的彎曲撓度

- **結構設計：**
比傳統式的沖床較為小型，但更有效的空間利用。
- **彎曲撓度**
機架鋼板具有高度機械應力和最低的彎曲撓度，可減少沖壓變形，保持沖壓部位的精密度，延長模具的壽命。

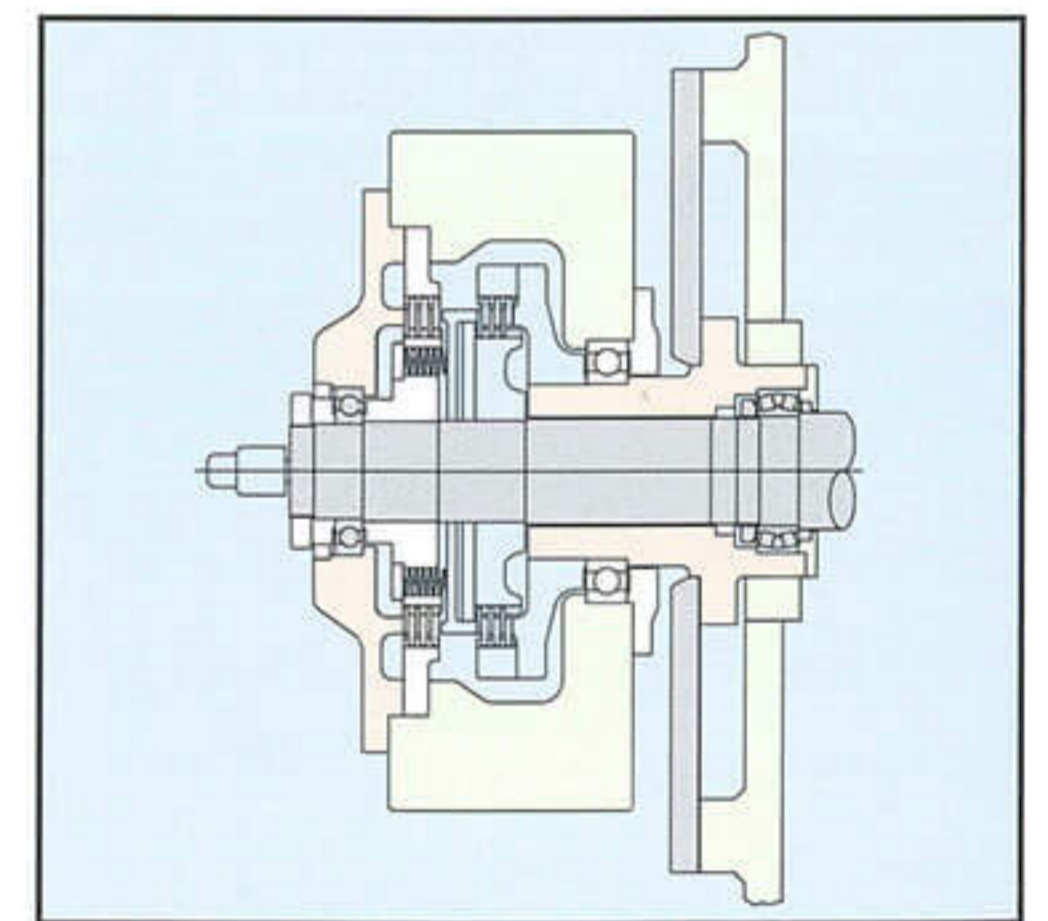


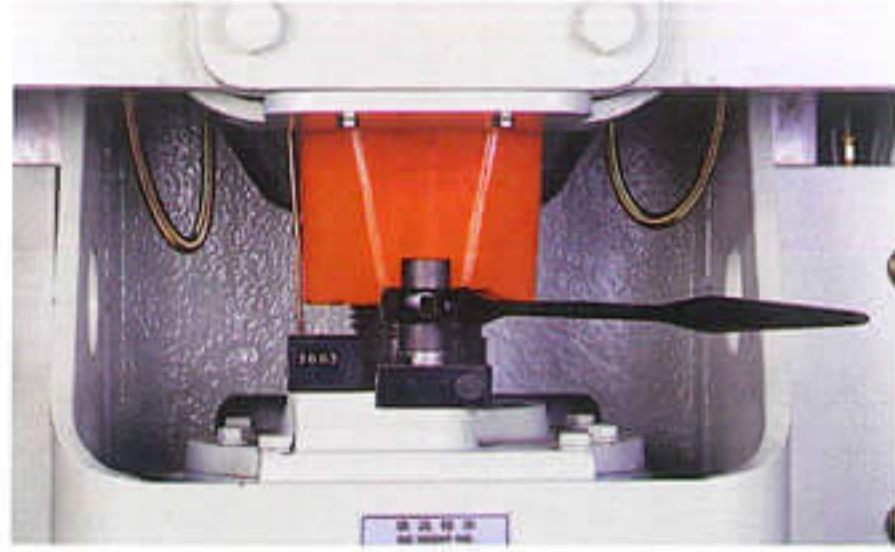
高傳動扭矩的濕式離合剎車器

- 高性能、高效率的浸油式離合、剎車來令片，提供永續性使用壽命。無磨耗困擾。
- 低慣性、高扭矩的多板式設計，使啟動、剎車的靈敏度大幅提昇。
- 獨特的設計可允許較高的斷續作業，適合機械手之連線作業。
- 低噪音、無污染，充份符合未來環保之要求。

High transmission wet clutch/brake

- High performance and efficiency oil-bathed clutch/brake linings provide lasting service life time, without the worry of being worn out.
- Low inertia/High torque multi-disk design, ensuring more improved sensitivity on start and brake.
- Unique design allows faster intermitten operation, good for synchronized operation with robot arm.
- Low noise, zero pollution, fully complied to the future requirement of environment protection.



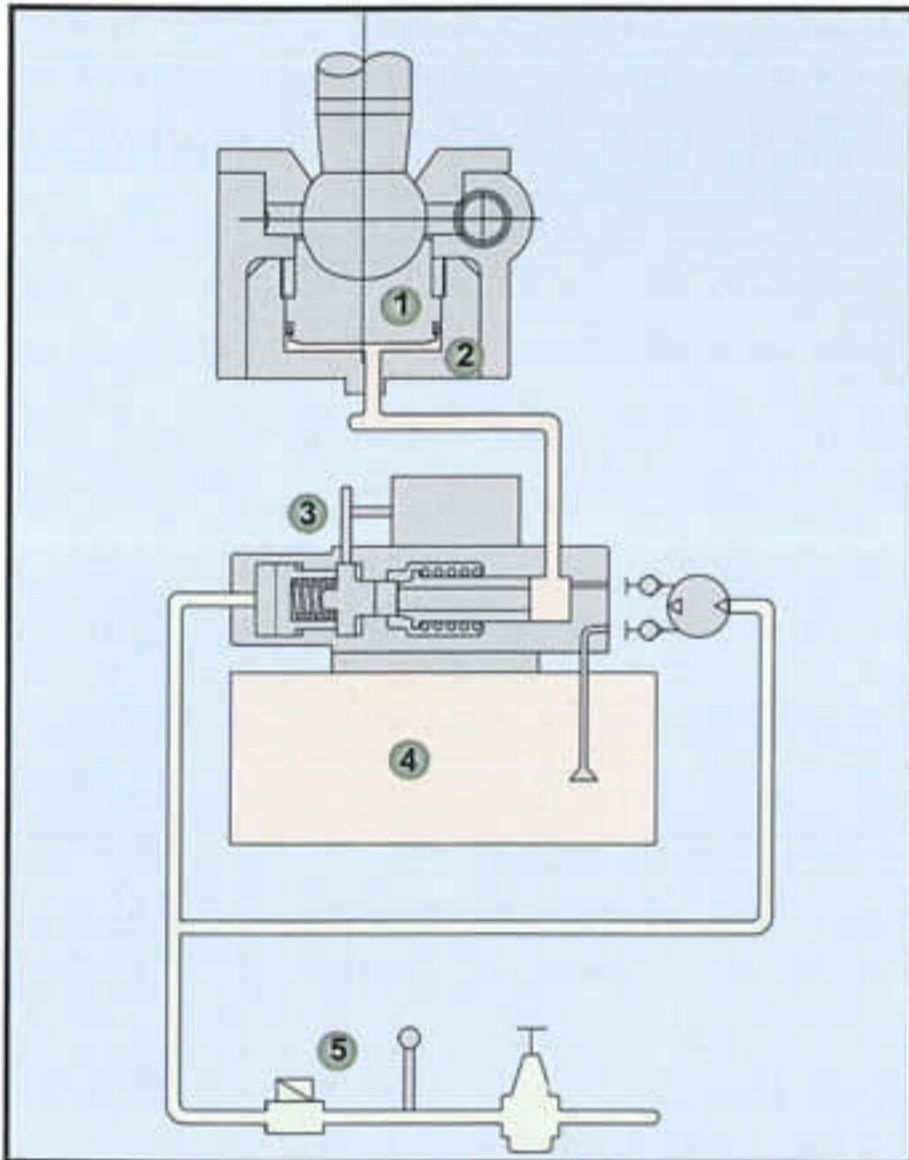


滑塊調整裝置
Slide Adjust Device

- 手動式 45~60噸
- 電動式 80~260噸
- Manual 45~60 Tons
- Electric 80~260 Tons



雙手式運轉按鈕操作箱
Two-Hand Push Buttons
Operation Box



① 油壓缸活塞	① Piston
② 油壓緩衝缸	② Hydraulic Cylinder
③ 超負荷保護裝置	③ H.O.L.P. Device
④ 油箱	④ Oil Tank
⑤ 空氣壓力調整總成	⑤ Air Regulation Unit



高信賴度之超負荷保護裝置

滑塊施力點、懸吊位置下設有油壓緩衝汽缸，當超負荷發生時，油壓缸內壓力瞬間洩載，同時沖床離合器脫離，並啟動剎車器，使滑塊停止運動，完成機器、模具保護動作，當超負荷狀況排除後，以寸動使滑塊回至上死點後，油壓泵浦會自動迅速補充油壓回復原狀。當卡模現象發生時，可強制將油壓緩衝缸內之油壓洩載，卡模現象可順利解除。

Highly reliable over-load protection device

Inside the slide, there is one precise hydraulic cylinder, as soon as larger load, the pressure of oil cylinder will be released, the clutch will stop the slide and complete the protection of press and dies. When over load situation ends, move the slide to top dead point by inch operation mode, the hydraulic pump will automatically make up the hydraulic pressure to the original set point. To eliminate stick situation, just release the hydraulic pressure inside the oil cylinder.

標準附件

1. 油壓式超負荷保護裝置
2. 手動齒輪式滑塊調整裝置 (SCP-45~SCP-60)
3. 電動式滑塊調整裝置 (SCP-80~SCP-260)
4. 數字式模高指示器
5. 滑塊及沖模平衡裝置
6. 機械式頂料裝置
7. 防止滑塊二度滑落安全裝置
8. 電磁式計數器
9. 誤送檢知裝置
10. 氣壓式吹料裝置
11. 維護工具
12. 手動式黃油潤滑裝置

特別附件

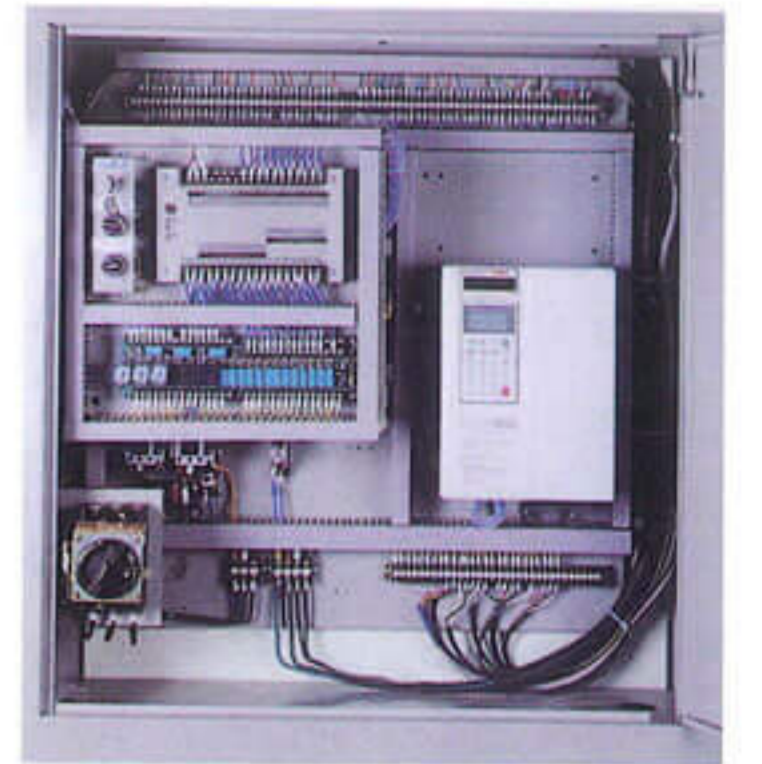
1. 光電式安全裝置
2. 無段變速裝置(變頻器或變速馬達)
3. 電動式潤滑裝置
4. 油壓、氣氣或氣壓式模墊裝置
5. 防震腳墊
6. 自動送料軸(SCP-80~SCP-260)

Standard attachment

1. Hydraulic Overload Protection Device
2. Manual Slide Adjust Device (SCP-45~SCP-60)
3. Electric Slide Adjust Device (SCP-80~SCP-260)
4. Die Height Indicator
5. Counter Balancers Device
6. Mechanical Knockout Device
7. Against Over Run Safety Device
8. Magnetic Stroke Counter
9. Miss Feed Check Device
10. Pneumatic Ejector
11. Maintenance Tools
12. Manual Grease Lubrication Device

Optional attachment

1. Light Curtain
2. Variable Speed Device(Inverter or V.S Motor)
3. Electric Lubrication Device
4. Hydraulic, N-Forcer or Pneumatic Die Cushion
5. Isolation Mounts
6. Power Take Off Shaft (SCP-80~SCP260)

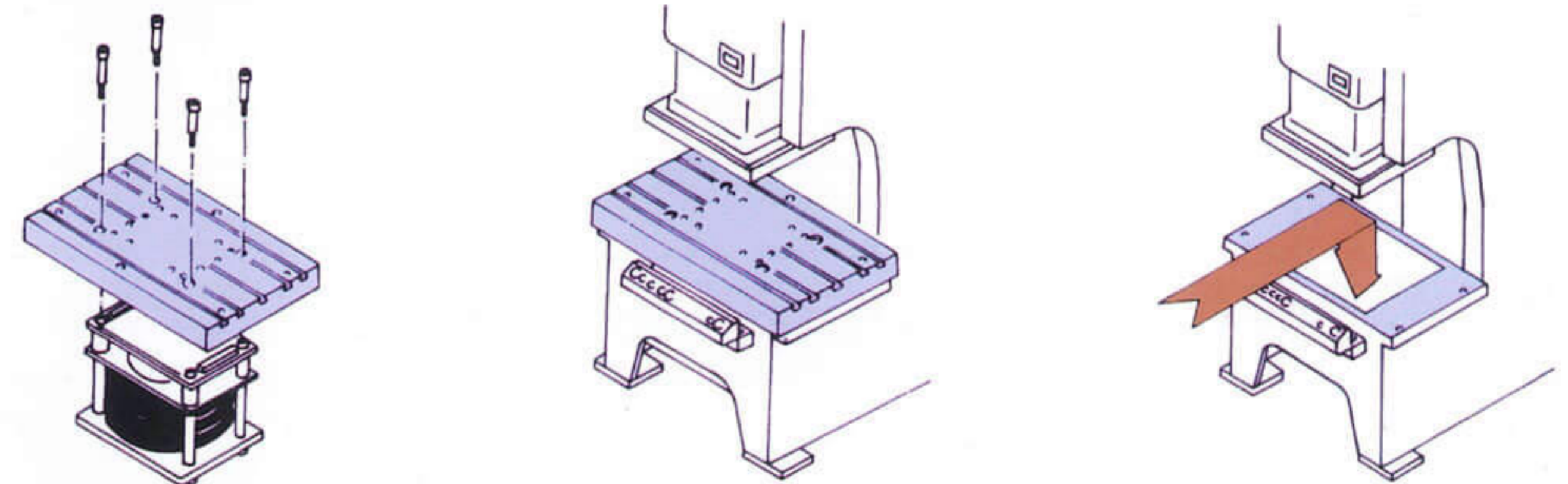


電氣控制迴路
Electric Control Circuit



微電腦觸控式操作面板
Micro Electric Control
Touch Screen Panel

模墊組裝圖 The assembly of die cushion



- 模墊組裝容易，不需基礎坑配合

It is convenient to assemble the die cushion and no need to dig base.

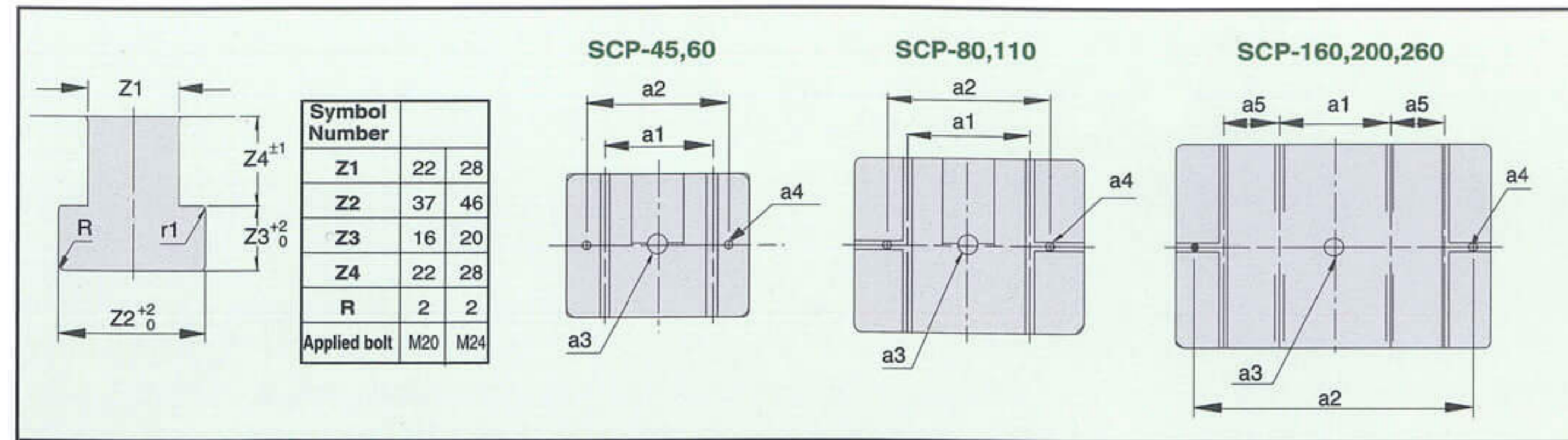
模墊規格 Specification of die cushion

型式/Model		SCP-45	SCP-60	SCP-80	SCP-110	SCP-160	SCP-200	SCP-260
能力/Capacity (at 5 kgf/cm ²)	ton	2.6	3.5	6.3	8	10	14	26
行程/Stroke length	mm	60	70	85	90	90	113	113
氣墊面積 (左右×前後) Pad area (R.L×F.B.)	mm	335x205	335x235	410x260	480x300	540x340	640x440	640x440

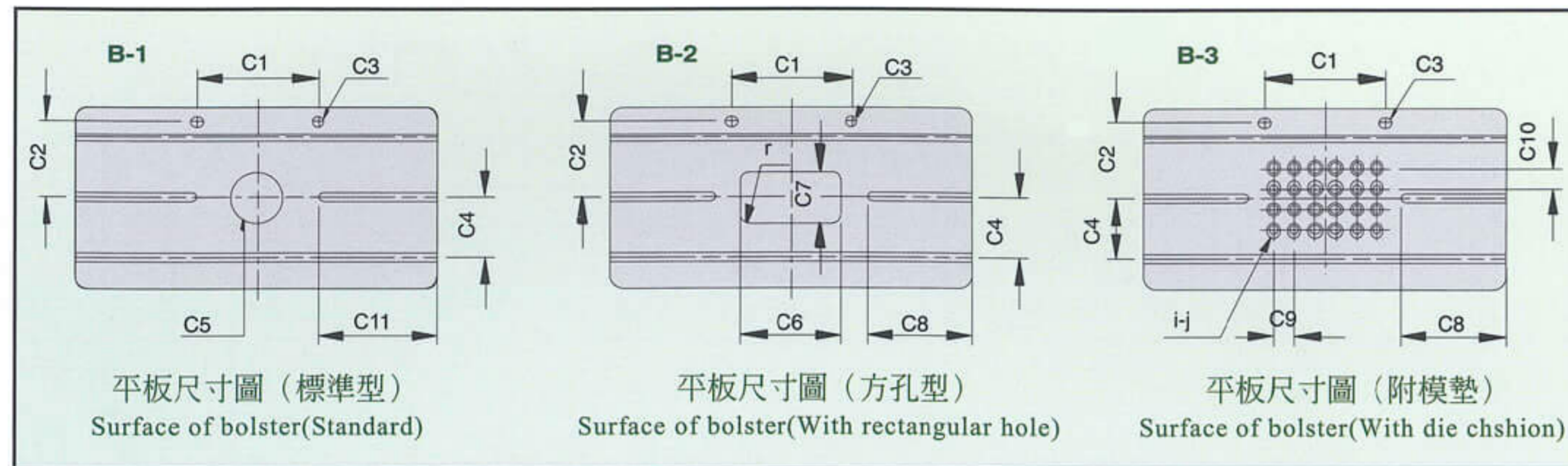


T型槽尺寸 / Size of T slot

滑塊表面圖 / Surface of slide



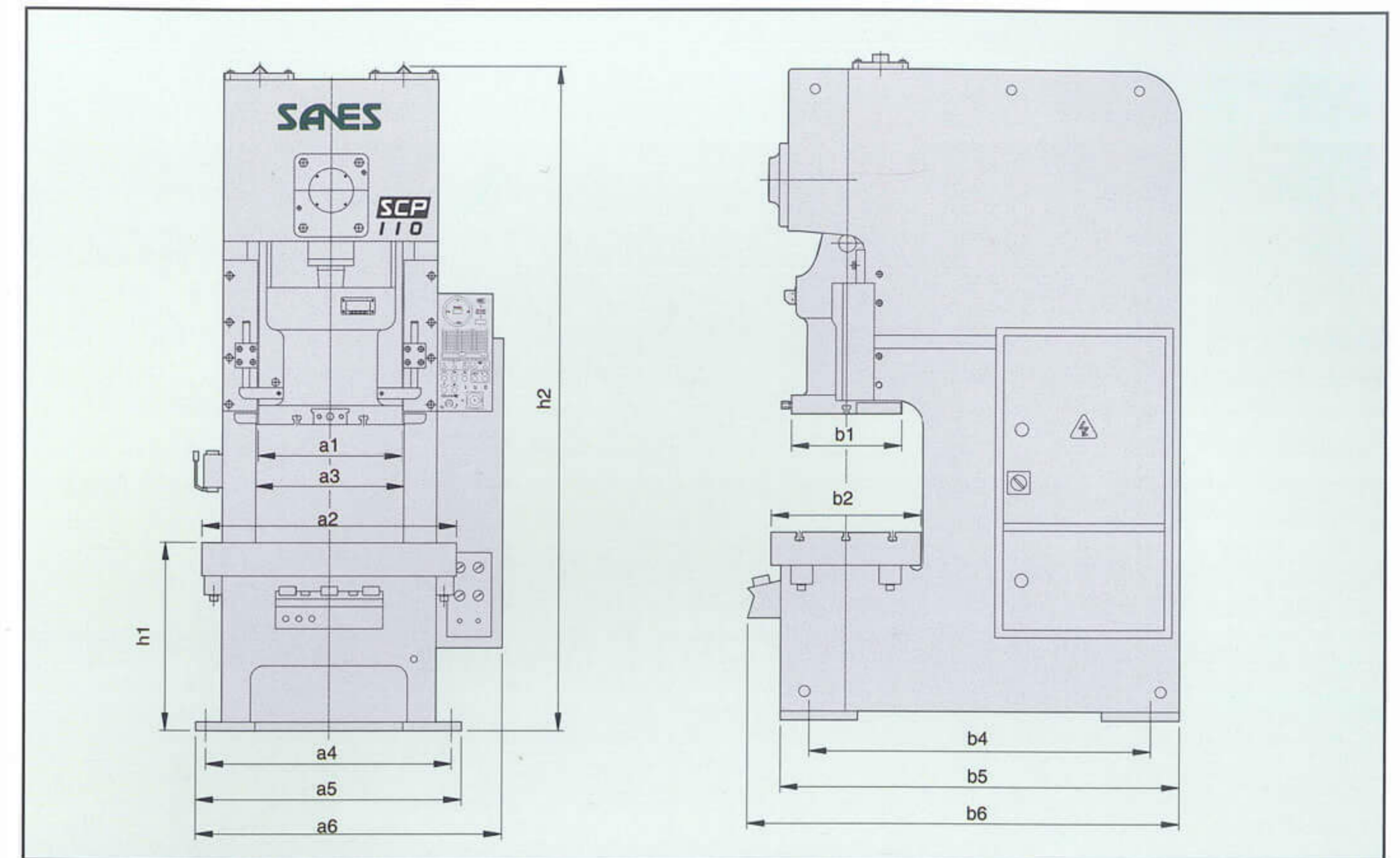
台盤表面圖 / Surface of bolster



台盤尺寸與滑塊底面尺寸 / Dimensions of bolster and slide

型式 Model	SCP-45	SCP-60	SCP-80	SCP-110	SCP-160	SCP-200	SCP-260
a1	260	300	300	300	300	300	320
a2	340	400	450	520	570	750	780
a3	Ø50.8	Ø50.8	Ø50.8	Ø50.8	Ø50.8	Ø50.8	Ø50.8
a4	Ø22	Ø22	Ø22	Ø22	Ø22	Ø22	Ø22
a5	—	—	—	—	150	150	180
c1	300	300	300	300	400	400	400
c2	190	215	240	300	335	380	380
c3	Ø26	Ø26	Ø26	Ø30	Ø30	Ø30	Ø30
c4	150	150	180	210	260	320	320
c5	Ø130	Ø150	Ø180	Ø200	Ø220	Ø250	Ø280
c6	260	300	360	400	440	500	600
c7	130	150	180	200	220	250	300
c8	240	260	260	300	340	370	370
c9	75	75	75	80	90	100	120
c10	100	100	75	80	90	100	120
c11	300	330	330	380	440	480	480
i	15pcs	15pcs	24pcs	32pcs	32pcs	48pcs	48pcs
j	Ø26	Ø26	Ø26	Ø32	Ø32	Ø32	Ø32
r	25	30	35	40	45	50	50

外型尺寸 / Dimensions



外型尺寸圖 / Dimensions

型式 / Model		SCP-45	SCP-60	SCP-80	SCP-110	SCP-160	SCP-200	SCP-260	
能力 / Capacity	ton	45	60	80	110	160	200	260	
能力發生位置 (下死點上)	mm	3.2	4	5	5	6	6	7	
Tonnage rating point (above B.D.C)									
行程 / Stroke Length	mm	110	130	150	180	200	220	250	
每分鐘行程數	SPM	標準 Standard	70	60	60	50	40	35	30
Stroke per minute		可變 Variable	50-95	45-85	40-75	35-65	30-55	25-45	20-40
閉合工作高度	mm	270	300	330	350	400	450	500	
Die height, Slide to bolster									
滑塊調整量 / Slide Adjust	mm	50	60	70	80	90	100	120	
滑塊面積 / Slide Area	mm	440x350	470x380	560x420	650x500	700x550	850x630	950x700	
台盤面積 / Bolster Area	mm	900x450	970x500	1000x550	1150x680	1300x750	1400x840	1500x840	
機架內側尺寸	mm	470	560	620	670	810	900	960	
Frame inside measurement a3									
工作高度	mm	800	800	800	900	900	1000	1200	
Floor Height to bolster h1									
機架總高度	mm	2450	2635	2870	3100	3290	3600	4200	
Press overall height h2									
地基螺絲位置	mm	730x1000	840x1135	920x1280	1110x1550	1220x1750	1360x2140	1460x2200	
Position of anchor bolt a4xb4									
機架佔地面積	mm	1050x1460	1021x1600	1120x1500	1260x1810	1340x2015	1700x2410	1800x2600	
Floor space required a5xb5									
主馬達		5HPx4P	5HPx4P	7.5HPx4P	10HPx4P	15HPx4P	20HPx4P	25HPx4P	
Main motor									
滑塊調整馬達		—	—	0.4kwx4P	0.4kwx4P	0.75kwx4P	0.75kwx4P	1.5kwx4P	
Slide adjust motor									